



Info Pack

About the space

Eyes On Fire Gallery is a space by artists, for artists, and as a result is a cost effective option for potential exhibitors. It is important to understand how the space works, what the costs are and conditions around utilising the space.

The EOF gallery layout consists of 1 x main space, and 1 x secondary smaller space. The main space fronts onto Great North Road in Grey Lynn, a very high foot traffic area and vehicular route - it's part of the corner heritage building on the corner of Ponsonby Rd & K'Rd, right in the heart of the CBD.

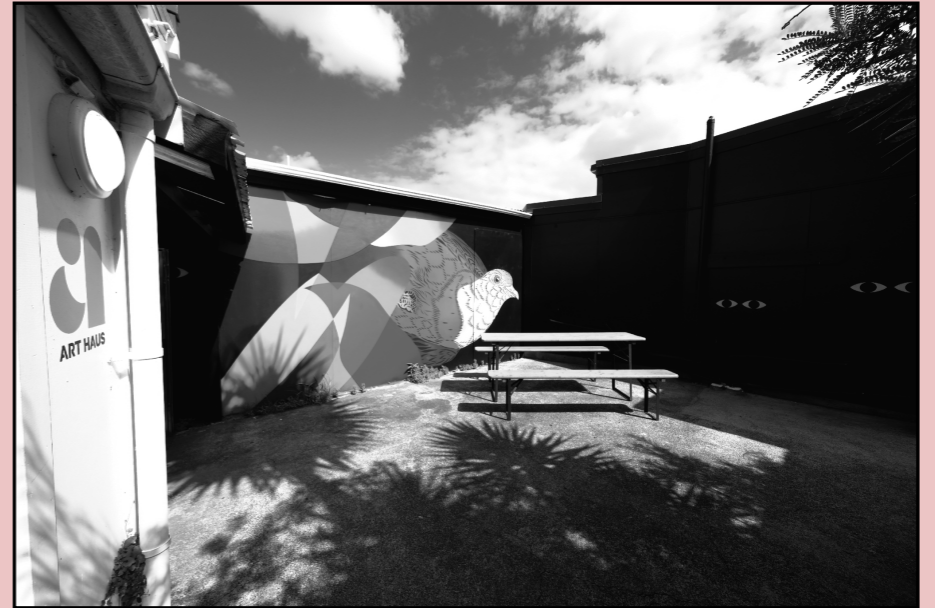
There is also an open air courtyard out the back which connects us with Haus Of FLOX. This space is an excellent artists' working space, and great for extending the footprint for exhibition openings.

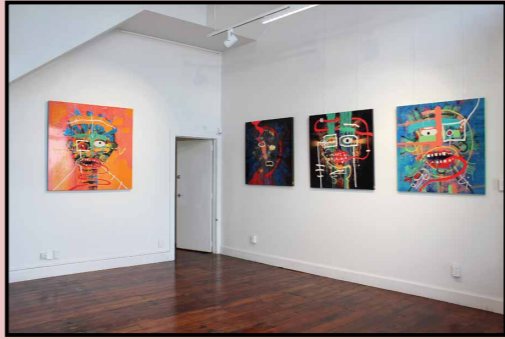
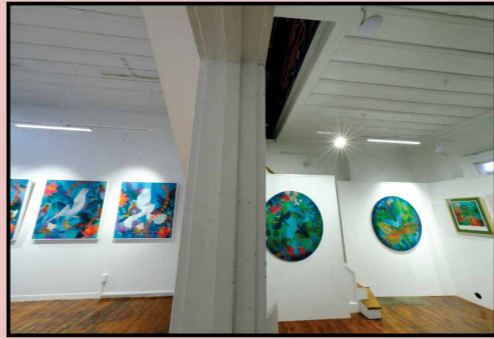




Features

- Gallery picture hanging system
- Portable PA System
- Basic Kitchen
- Platters / some serve ware
- Private Courtyard
- 6 x Mobile Stainless Steel Benches
- 12 x Stools
- Cleaning service included
- Outdoor commercial grade umbrella
(covers a good chunk of the courtyard)





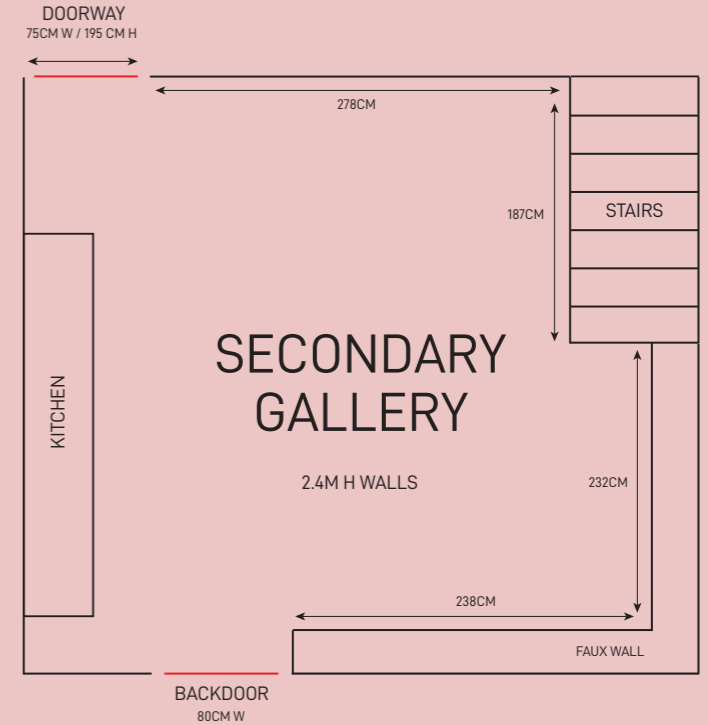
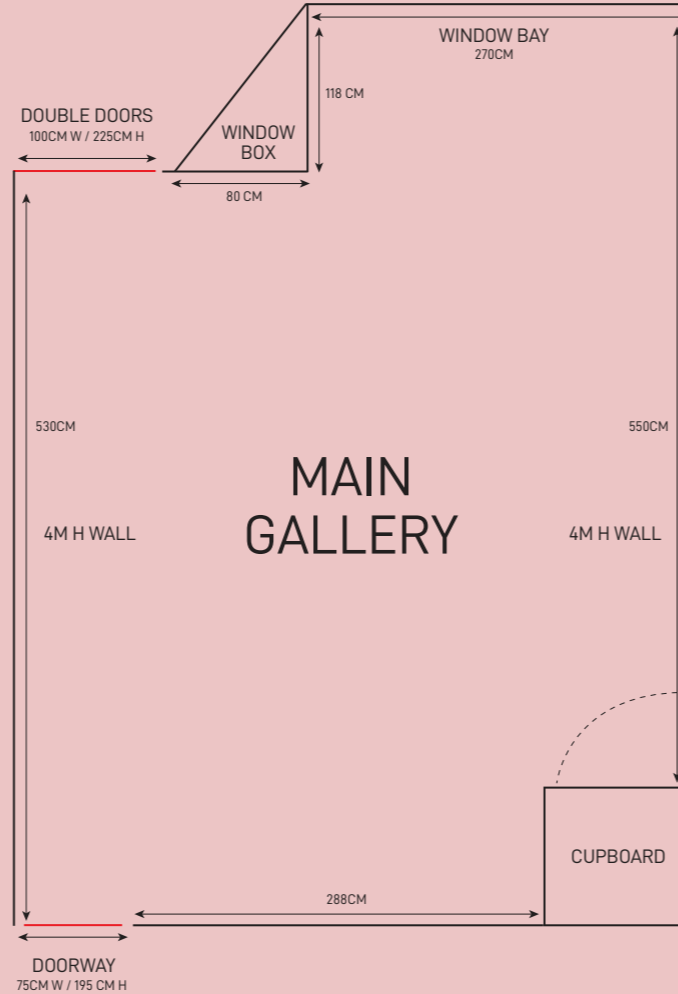
Main Gallery

Secondary Gallery



Floor Plan

← 20M CORNER OF PONSONBY & K'RD GREAT NORTH ROAD



Costs

We have set a weekly charge of \$245 to cover the costs of incidentals and we expect for you to exhibit for a duration of three weeks. It is our intention to have approximately 12 shows a year, at one per month. If you are interested in showing with us, it is advised to firstly let us know what month works best for you, so we can pencil it at our end.

Our commission rate on any sold works, while they are with us at EOF is 20%. This also applies to extra custom orders generated (both online or physically) during the course of your exhibition.

We will endeavour to promote your show through the Eyes On Fire and FLOX social channels leading up to the show, and it is mandatory that you also do the same. We have an in house graphic designer (SWEATS) that can design your promotional material for an extra charge, otherwise it is your responsibility to create all promotional material and share with EOF team. Any printing of flyers or window vinyls are also at your own cost.

**ONLY 20%
COMMISSION RATE**



Terms & Conditions

It is your own responsibility as the artist(s), to get your work to and from the gallery and it is mandatory that you are there to hang your show and be present at the opening. It is not mandatory that you stay for the entire three weeks, and in the absence of yourself after the opening, the FLOX team at Haus Of Flox (next door) will be on the ground to show people through the space during EOF open hours:

Wednesday's/Thursday's/Friday's 10am -5pm and Saturday's 10 - 4pm.

Artists are responsible for packing up all sold artworks at the end of their show and the works must be packed fit for shipping if required. Haus of Flox can facilitate the postage and pick up with clients individually from our showroom at 13 Great North Road next door to EOF Gallery.

It is the artist's responsibility to cover the costs/facilitate opening night food and beverages. At Eyes On Fire, we have kitchen facilities that you are welcome to use along with catering platters, cutlery. No glassware provided.

The gallery comes equip with spot lighting, and a contemporary hang system to avoid damage to the walls. There are also optional plinths, available. If you need to drill into the walls, we just ask that you leave it as you found it. If you are an out of townner, the FLOX team can facilitate a pack down of your show for a nominated fee. This will be based on a case by case basis.

Eyes On Fire must be left tidy at the end of your booking.



Sponsorship

Eyes On Fire Gallery is also comes with its own wine sponsorship, BRANCOTT ESTATE and STONELEIGH. We are very lucky to be kindly supported by this Kiwi business, who offer a range of wine products for every exhibition opening.

BRANCOTT
ESTATE™

STONELEIGH™
OF MARLBOROUGH
NEW ZEALAND



Workshops

With creativity and inclusivity at the forefront of its ethos, Eyes On Fire aims to promote arts and culture, whilst also working to inspire passion and appreciation for all things creative. With this in mind, the gallery also functions as a workshop space and is a place where we encourage our artists to extend their creativity and pass on knowledge/skills.

Incorporating a workshop(s) during your show with us, is beneficial all round, both to you and your participants, bringing more people through the gallery, whilst being surrounded by your artwork. It is of course, another viable option for you to bring in more revenue.

The recommended class size is 12 pax, and Eyes On Fire takes a 20% commission on all participant ticket sales.

For advice on workshopping, FLOX has more than 10 years experience teaching her own classes and is very open to further discussion and sharing tips on how to facilitate.



Stay at Art Haus

As an add on, take advantage of Art Haus, Air BNB accomodation upstairs from the gallery available for \$179 a night plus booking fees. If you're an artist showing with us, and need a place to stay, then we can offer it to you at the Artist in Residence rate of \$150 inclusive per night. The space consists of two rooms, two beds, one kitchenette and one bathroom. There are also laundry facilities upon request.

Situated at the heart of Grey Lynn's art district, on the doorstep of Ponsonby and K-road's bars and eateries, and located directly above the Eyes on Fire Gallery, this beautifully styled two bedroom space is ideal for those searching for centrally located accomodation or for those attending an Eyes on Fire workshop/event. With plenty of FLOX artwork adorning the walls, this one of a kind space even includes an interior stairway mural, hand painted by FLOX x SWEATS which glows with neons with you hit the UV lights.

Art Haus is rated as an Air Bnb SUPERHOST.



Art Haus Features

Art Haus:

- Room 1 / Room 2
- Queen size bed Room 1
- Fold out Queen size bed Room 2
- Flat screen with Apple TV x2
- Couch
- Fold out work desk
- Fibre internet

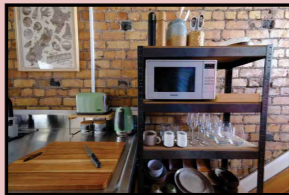
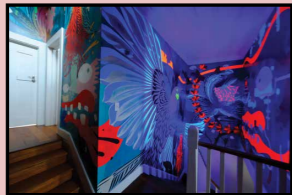
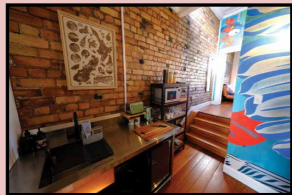
Bedroom & laundry:

- Fresh linen & towels
- Forest & Bird x FLOX toiletries
- Laundry facilities on request

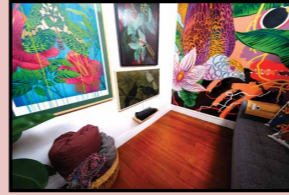
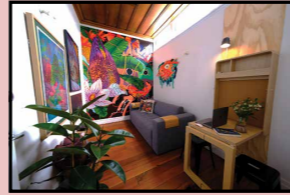
Kitchenette:

- Tea & coffee facilities
- Fridge / Microwave
- Toaster / Jug
- Glasses, Mugs, Cutlery





Room 1



Room 2



Booking

If Eyes On Fire sounds like your jam, then please hit us up. As a team, we have many years experience as artists ourselves, so we know what it takes to put on a good show. You come first here, the space is yours to transform, use it for your purpose and broaden your audiences. We look forward to hosting you.

Team EOF



For bookings:

15 Great North Rd
Grey Lynn 1021
Auckland

09 963 4293

gallery@eyesonfire.nz
eyesonfire.nz



We look forward to hosting you
